

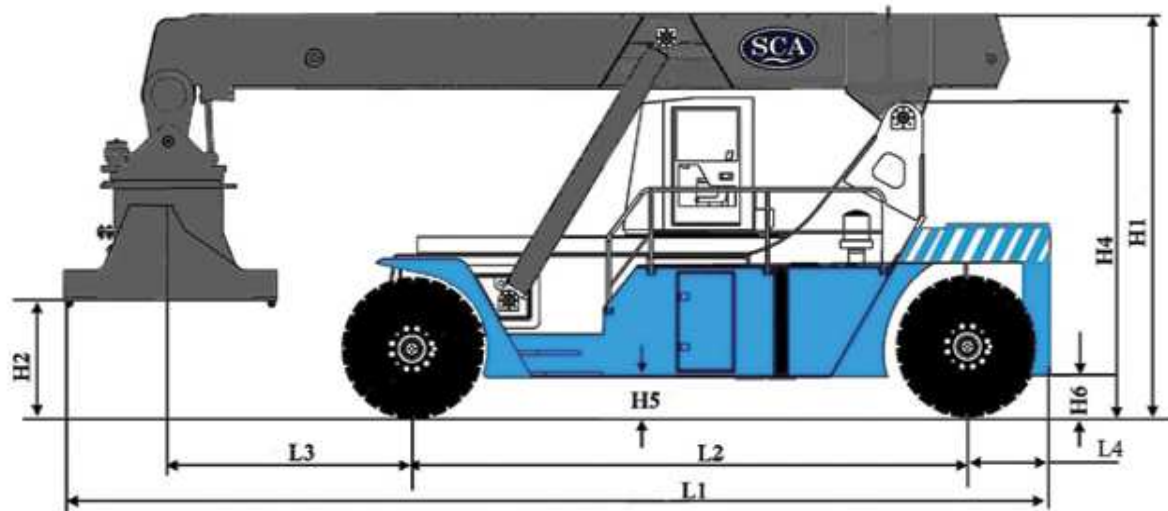


LCH RS 45/5 LOADED REACH STACKER

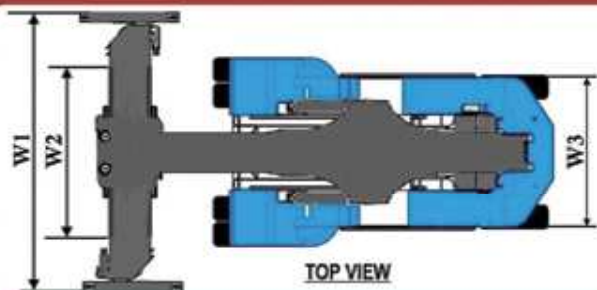


SCA HEAVY EQUIPMENT PVT.LTD.

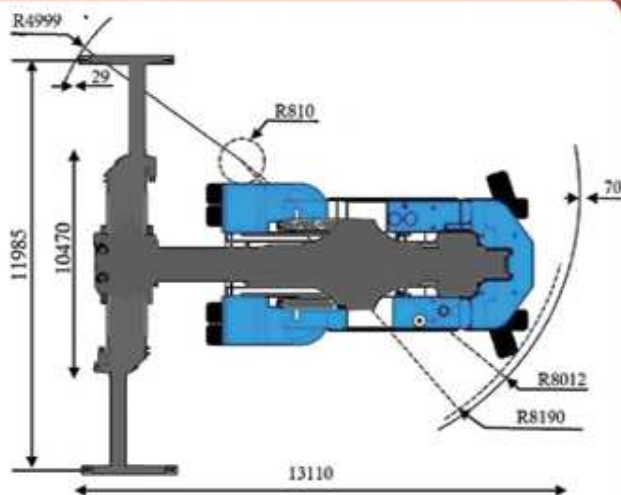
SPECIFICATION	Manufacturer		SCA
	Model		LCH RS-45/5
	Power Unit		Diesel
	Tyre - Front		18:00 x 25, 40 PR - 4 Nos
	Tyre - Rear		18:00 x 25, 40 PR - 2 Nos
	Battery	V/ah	12/180x2
PERFORMANCE	Lifting Capacity	Kgs	45000
	Lift Height	m	15.26
	Driving Speed (Laden / Unladen)	Km/h	21 / 25
	Lifting Speed (Laden / Unladen)	m/sec	0.26 / 0.42
	Lowering Speed (Laden / Unladen)	m/sec	0.4 / 0.25
	Stability	%	40
	Gradeability with 250kW Engine @ 2kmph	%	22
WEIGHTS	Gross Vehicle Weight (Laden / Unladen)		122,700 / 77,700
	Static Weight on Front Axle (Laden/Unladen)		1,03,200 / 39,400
	Static Weight on Rear Axle (Laden/Unladen)		19,500 / 38,300
ENGINE	Make		SCANIA
	Model		DC13 074A
	Rated Power	kW (hp)	257 (350)
	Speed	RPM	2100
	Peak Torque	Nm/rpm	1950 / 1200
	No. of Cylinders / Displacement	No. /Cm3	6 / 1270
TRANSMISSION	Make		ZF
	Model		4WG-261
	No. of Gears - F/R		4 / 3
	Type		Electronic power shift
DRIVE AXLE	Make		OMCI / KESSLER
	Model		AR290GM4 / D102PL341
	Track width		3104
	Brakes		Hydraulic Operated Out Board Wet Disc Brake
DIMENSIONS	Machine Height	H1	4732
	Minimum Height Under the Spreader	H2	1423
	Maximum Height Under the Spreader	H3	14934
	Chassis Height	H4	3705
	Ground Clearance	H5	484
	Height	H6	526
	Over all Length	L1	11548
	Wheel Base	L2	6500
	Length	L3	2866
	Length	L4	967
	Over all Width	W1	6100
	Width over Front Tyres	W2	4220
	Width over Rear Tyres	W3	3390



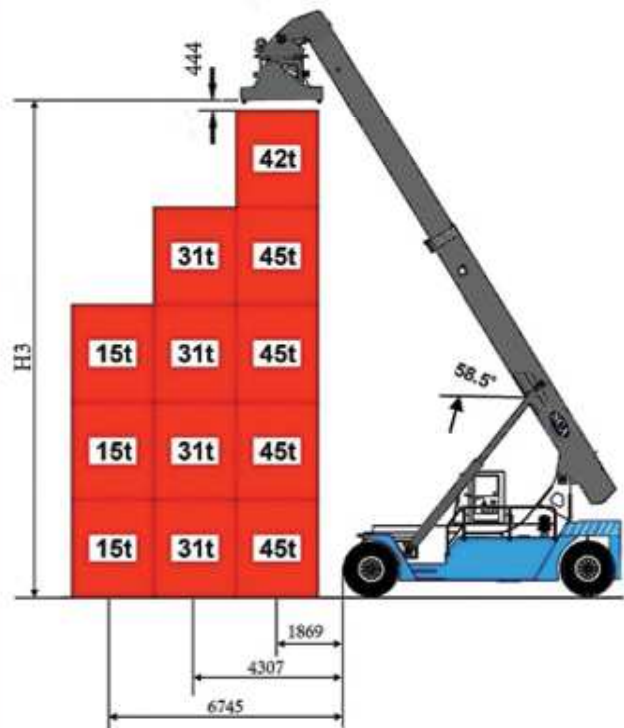
GENERAL VIEW



TOP VIEW



AISLE WIDTH



LOAD CHART

OPTIONAL EQUIPMENT

1. Automated centralised greasing System.
2. 60 T Winch block with accessories for pick and carry application.
3. Air conditioned cabin.

SALIENT FEATURES

1. Rear view camera for enhanced Rear visibility.
2. Solenoid operated battery master tripping safety switch.
3. Turbo Precleaner

- Built with a strong foundation based on 35 years of designing, manufacturing and after market support experience, SCA understands that performance is everything. It helps you lift your load handling efficiency to the next level with its stamina packed, durable and reliable Reach stackers. Custom engineered for a premium and efficient performance based on the customer needs and expectations, SCA Reach Stackers help you to lower your total cost of ownership, dependence on fossil fuel consumption and costs while delivering the best load handling solution.



SCA HEAVY EQUIPMENT PVT. LTD.,

Regd. Office :

10A, 2nd Phase, Peenya Industrial Area,
Bangalore - 560058, India.

Ph : +91 080 - 28394532, Fax : 28374666

Factory :

Sy.No.42/5, Katha No. 173, Kaneshmari
No. 117/53, Arasinakunte Village,

Kasaba Hobli, Nelamangala Taluk, Bengaluru Dist.

www.scahe.co.in